

DEPARTMENT OF THE ARMY TECHNICAL MANUAL

**DIRECT SUPPORT AND GENERAL SUPPORT MAINTENANCE
REPAIR PARTS AND SPECIAL TOOLS LISTS (INCLUDING
DEPOT MAINTENANCE REPAIR PARTS AND SPECIAL TOOLS)
TEST SET TS-172A/UP AND CAVITY, TUNED TS-172B/UP
FSN 6625-643-8505**

Headquarters, Department of the Army, Washington, D.C.
29 June 1973

Current as of November 1972

	Paragraph	Page
Section I. INTRODUCTION		
Scope	1 - 1	
General	1 - 2	
Explanation of columns	1 - 3	
Special information	1 - 4	
Location of repair parts	1 - 5	4
Abbreviations (Not applicable)	1 - 6	4
Reporting of equipment publication improvements	1 - 7	4
II. REPAIR PARTS LIST		6
III. SPECIAL TOOLS, TEST AND SUPPORT EQUIPMENT (Not applicable)		
IV. INDEX - FEDERAL STOCK NUMBER AND REFERENCE NUMBER CROSS-REFERENCE TO FIGURE AND ITEM NUMBER		12

SECTION I

INTRODUCTION

1-1. Scope

This manual lists repair parts and special tools required for the performance of direct support, general support, and depot maintenance of the TS-172A/UP and TS-172B/UP. The PCCN for the equipment is GTEABQ for all models.

1-2. General

This repair parts and special tools list is divided into the following sections:

a. Repair Parts List-Section II. A list of repair parts authorized for the performance of maintenance at the direct support, general support, and depot level. This repair parts list is arranged in alphabetical order.

b. Special Tools, Test and Support Equipment - Section III. Not applicable.

c. Index-Federal Stock Number and Reference Number Cross-Reference to Figure and Item Number-Section IV. A list, in ascending numerical sequence, of all Federal stock numbers appearing in the listings, followed by a list, in alphameric sequence, of all reference numbers appearing in the listings. Federal stock number and reference numbers are cross-referenced to each illustration figure and item number or reference designation appearance.

1-3. Explanation of Columns

The following provides an explanation of columns found in the tabular list.

a. Source, Maintenance, and Recoverability Codes (SMR).

(1) *Source code.* Indicates the source for the listed items. Source codes are-

<i>Code</i>	<i>Explanation</i>
P -	Repair parts, special tools and test equipment supplied from the GSA/DSA or Army supply system and authorized for use at indicated maintenance categories.
P 2 -	Repair parts, special tools and test equipment which are procured and stocked for insurance purposes because the combat or military essentiality of the end item dictates that a minimum quantity be available in the supply system.
P 9 -	Assigned to items which are NSA design controlled: unique repair parts, special tools, test, measuring, and diagnostic equipment which are stocked and supplied by the Army COMSEC Logistic

<i>Code</i>	<i>Explanation</i>
	System and which are not subject to the provisions of AR 380-41.
P10-	Assigned to items which are NSA design controlled: special tools, test, measuring, and diagnostic equipment for COMSEC support which are accountable under the provisions of AR 380-41 and which are stocked and supplied by the Army COMSEC Logistic System.
M -	Repair parts, special tools and test equipment which are not procured or stocked as such in the supply system but are to be manufactured at indicated maintenance levels.
A -	Assemblies which are not procured or stocked as such but are made up of two or more units. Such component units carry individual stock numbers and descriptions, are procured and stocked separately, and can be assembled to form the required assembly at indicated maintenance categories.
X -	Parts and assemblies that are not procured or stocked because the failure rate is normally below that of the applicable end item or component. The failure of such part or assembly should result in retirement of the end item from the supply system.
X 1 -	Repair parts which are not procured or stocked. The requirement for such items will be filled by the next higher assembly or component.
x 2 -	Repair parts, special tools and test equipment which are not stocked and have no foreseen mortality. The indicated maintenance category requiring such repair parts will attempt to obtain the parts through cannibalization or salvage. The item may be requisitioned, with exception data, from the end item manager for immediate use.
G -	Major assemblies that are procured with PEMA funds for initial issue only as exchange assemblies at DS and GS level. These assemblies will not be stocked above DS and GS level or returned to depot supply level.

NOTE

Cannibalization or salvage may be used as a source of supply for any items source coded above except those coded X1 and air-

craft support items as restricted by AR700-42.

(2) *Maintenance code.* Indicates the lowest category of maintenance authorized to install the listed item. Capabilities of higher maintenance categories are considered equal or better. Maintenance codes are—

Code	Explanation
C	Crew/operator
O	Organizational maintenance
F	Direct support maintenance
H	General support maintenance
D	Depot maintenance

(3) *Recoverability code.* Indicates whether unserviceable items should be returned for recovery or salvage. Items not coded are nonrecoverable. Recoverability codes are—

Code	Explanation
R—	Repair parts (assemblies and components), special tools and test equipment which are considered economically repairable at direct and general support maintenance levels. When the item is no longer economically repairable, it is normally disposed of at the GS level. When supply considerations dictate, some of these repair parts may be listed for automatic return to supply for depot level repair as set forth in AR 710-1. When so listed, they will be replaced by supply on an exchange basis.
S—	Repair parts, special tools and test equipment, and assemblies which are economically repairable at DS and GS activities and which normally are furnished by supply on an exchange basis. When items are determined by a GSU to be uneconomically repairable, they will be evacuated to a depot for evaluation and analysis before final disposition.
T—	High dollar value recoverable repair parts, special tools and test equipment which are subject to special handling and are issued on an exchange basis. Such items will be repaired or overhauled at depot maintenance activities only. No repair may be accomplished at lower levels.
U—	Repair parts, special tools and test equipment specifically selected for salvage by reclamation units because of precious metal content, critical materials, high dollar value, or reusable casings or castings.

b. Federal Stock Number. Indicates the Federal stock number assigned to the item and will be used

for requisitioning purposes.

c. Description. Indicates the Federal item name and a minimum description required to identify the item. The last line indicates the reference number followed by the applicable Federal Supply Code for Manufacturer (FSCM) in parentheses. The FSCM is used as an element in item identification to designate manufacturer or distributor or Government agency, etc., and is identified in SB 708-42.

d. Unit of Measure (U/M). Indicates the standard or basic quantity by which the listed item is used in performing the actual maintenance function. This measure is expressed by a two-character alphabetical abbreviation, e.g., ea, in, pr, etc., and is the basis used to indicate quantities and allowances in subsequent columns. When the unit of measure differs from the unit of issue, the lowest unit of issue that will satisfy the required units of measure will be requisitioned.

e. Quantity Incorporated in Unit. This column indicates the quantity of the item used in the equipment.

f. 30-Day DS/GS Maintenance Allowances.

NOTE

Allowances in GS column are for GS maintenance only.

(1) The repair parts indicated by asterisk entries in separate allowance columns for DS and GS represent those authorized for use at that category of maintenance to be requisitioned on an "as required" basis, until stockage is based on demand in accordance with AR 710-2.

(2) Allowance quantities are indicated in the special tool lists section for special tools, TMDE, and other support equipment.

g. 1-Year Allowances Per 100 Equipments/Contingency Planning Purposes. Column intentionally left blank.

h. Depot Maintenance Allowance Per 100 Equipments. This column indicates opposite the first appearance of each item the total quantity authorized for depot maintenance of 100 equipments.

i. Illustration. This column is divided as follows:

(1) *Figure number.* Indicates the figure number of the illustration on which the item is shown in TM 11-1262.

(2) *Item number.* Indicates the item number or reference designation used to reference the item in the illustration.

1-4. Special Information

a. Usable on codes are included in column 3. Uncoded items are applicable to all models. Identifications of the usable on codes used in this publication are—

<i>Code</i>	<i>Used on</i>
AMK	TS-172A/UP
AML	TS-172B/UP

b. The following publications pertain to the equipment and its components:

TM 11-1262	Test Set TS-172A/UP and Tuned Cavity TS-172B/UP.
TM 11-6625-341-20P	Organizational Maintenance Repair Parts and Special Tools Lists: Test Set TS-172A/UP and Cavity, Tuned TS-172B/UP.

1-5. Location of Repair Parts

a. This manual contains one cross-reference index (sec IV) to be used to locate a repair part when either the Federal stock number or reference number (manufacturer's part number) is known. The first column in the index is prepared in numerical or alphanumeric sequence in ascending order. The reference numbers (manufacturer's part numbers) are listed immediately following the last listed Federal stock number in the index of Federal stock numbers.

b. When the Federal stock number or reference number is known, follow the procedures given in (1) and (2) below.

(1) Refer to the index of Federal stock numbers

(sec IV) and locate the Federal stock number or reference number. The FSN and reference number are cross-referenced to the applicable figure and item number or reference designation.

(2) Refer to the repair parts list (sec II) and locate the figure number (col 10a) and item number or reference designation (col 10b) as noted in the FSN index.

c. When the figure and item number or reference designation are known, scrutinize columns 10a and 10b of the repair parts list (sec II) until the item is located.

a. When the FSN, reference number, figure number, item number and reference designation are not known, scrutinize column 3 of the repair parts list (sec II), which is arranged in alphabetical order.

1-6. Abbreviations

Not applicable.

1-7. Reporting of Equipment Publication Improvements

The reporting of errors, omissions, and recommendations for improving this publication by the individual user is encouraged. Reports should be submitted on DA Form 2028 (Recommended Changes to Publications) and forwarded direct to Commander, US Army Electronics Command, ATTN: AMSEL-MA-CRA, Fort Monmouth, N.J., 07703.

(Next printed page is 6)

SECTION II

TM11-6625-341-34P

(1) SWR CODE	(2) FEDERAL STOCK NUMBER	(3) DESCRIPTION REFERENCE NUMBER & MFR CODE USABLE ON CODE	(4) UNIT OF MEAS	(5) QTY INC UNIT	(6) 30-DAY GS MAINT ALLOWANCE			(7) 30-DAY GS MAINT ALLOWANCE			(8) 1-YR ALW PER EQUIP CNTGCT	(9) DEPOT MAINT ALW PER EQUIP	(10) ILLUSTRATION	
					(a)	(b)	(c)	(a)	(b)	(c)			(a)	(b)
					1-20	21-50	51-100	1-20	21-50	51-100			FIGURE NO	ITEM NO
P H	5935-258-4382	ADAPTER, CABLE P107 TO HOLD CABLE IN... METER HOUSING 186P107 (06053)	EA	1			*	*	*			4	5-5	P107
P D	5935-498-1131	ADAPTER, CONNECTOR P105 TO CONNECT W102. TO P107 UG278U (12992)	EA	1	*	*	*	*	*			4	5-4	P105
P HS	6625-532-4195	AMMETER W101 DC PANEL TYPE..... 0-100CW 3-1/2 IN DIA C078407314 (11242)	EA	1			*	*	*			3	5-5	W101
P H	6625-539-9646	AMMETER W101 DC PANEL TYPE..... 0-100CW 3-1/2 IN DIA NOTE USED ON CONTRACT H5198	EA	1			*	*	*			3	5-5	W101
P H	3110-156-7498	BEARING, BALL W101 TO POSITION O103..... SINGLE ROW 186O101 (06053)	EA	2			*	*	*			2	5-4	O101
P H	3120-309-3600	BEARING SLEEVE W107 PLAIN, FLANGED..... 1-7/16 IN LG 186O107 (06053)	EA	1			*	*	*			2	5-4	O107
P D	6625-309-3463	BLOCK, MOUNTING ALL6 SUPPORT FOR..... CRYSTAL HOUSING RECTANGULAR 1-5/16 IN LG X 1 1/16 IN SQ 186A116 (06053)	EA	1			*	*	*			3	5-1	A116
P H	5975-395-8980	BUSHING, MACHINE THREAD W121 TO HOLD..... CONTROL SHAFT TO PANEL HANDLE CYLINDRICAL 7/16 IN LG X 1 1/16 IN HEX 186H121 (06053)	EA	1			*	*	*			3	5-5	W121
P H	6625-301-4492	BUSHING, MACHINE THREAD W119 TO HOLD..... W16 SLEEVE CYLINDRICAL 7/16 IN LG X 1 1/16 IN HEX 186H119 (06053)	EA	4			*	*	*			3	5-5	W119
P H	6145-661-0191	CABLE, RADIO FREQUENCY W105..... RG59AU (80059)	EA	1			*	*	*			10	5-5	W105
P H	6145-643-2107	CABLE, RADIO FREQUENCY W104..... RG21AU (81359)	EA	1			*	*	*			10	5-5	W104
P H	5910-160-1105	CAPACITOR, FIXED, PAPER DIELECTRIC C101... 1MFD, 100VDC CP53B1E105V (91349)	EA	1			*	*	*			3	5-5	C101
P D	6625-532-4057	SHEET, INSTRUCTION W108 WHITE OPAQUE... W/VINYL PROTECTOR 176N108 (06053)	EA	1	*	*	*	*	*			3	5-5	W108
P D	6625-309-3466	CARD, RECORDING W109 WHITE OPAQUE..... W/VINYL PROTECTOR 186N109 (06053)	EA	1	*	*	*	*	*			3	5-5	W109
P D	6625-309-3269	CYLINDER A102 ALUM ALLOY 15 IN DIA..... 186A102 (06053)	EA	1			*	*	*			3	5-4	A102
P H	5940-195-9698	CLIP, ELECTRICAL W141 FOR SOCKET WRENCH.. 186H141 (06053)	EA	1			*	*	*			3	5-4	W141
P H	5940-537-4213	CLIP, ELECTRICAL W142 FOR ALLEN WRENCH.. 186H142 (06053)	EA	1			*	*	*			3	5-5	W142
P H	5935-149-3983	CONNECTOR, PLUG, ELECTRICAL P103 P-7..... W102 AND W103 UG18CU (12992)	EA	3			*	*	*			3	5-5	P103

SECTION II

TM11-6625-341-34P

SMR CODE	FEDERAL STOCK NUMBER	DESCRIPTION REFERENCE NUMBER & MFR CODE	UNIT OF MEAS	QTY IN UNIT	30-DAY GS MAINT ALLOWANCE			30-DAY CS MAINT ALLOWANCE			1 YR ALW PER EQUIP	DEPOT MAINT ALW PER EQUIP	ILLUSTRATION	
					(a)	(b)	(c)	(a)	(b)	(c)			(a)	(b)
					1-20	21-50	51-100	1-20	21-50	51-100			FIGURE NO	ITEM TAG
P H	5935-201-9374	CONNECTOR, RECEPTACLE, ELECTRICAL P-0 W/O Z UG1900 (12992)	EA	1				*	*	*	3	5-5	J101	
P H	5935-173-5895	CONNECTOR PLUG, ELECTRICAL P104..... UG2600U (12992)	EA	1				*	*	*	3	5-5	P104	
P H	5935-149-4136	CONNECTOR, RECEPTACLE, ELECTRICAL P-0 PROBE P102 UG2900U (12992)	EA	1				*	*	*	3	5-1	P106	
P H	6625-322-4160	SPACER H128 ELECTRICAL CONTACT FOR..... CR101 BRASS CYLINDRICAL 9/32 IN DIA X 23/32 IN LG 186H128 (06053)	EA	1				*	*	*	2	5-1	H128	
P H	6625-049-7806	COVER, GASKET A106 CUP SHAPED 1-15/32... IN OD X 1.406 IN ID X .0032 IN THK D/A 186A106 (06053)	EA	1				*	*	*	3	5-4	A106	
P H	5355-545-7468	DIAL CONTROL N101 KNOB TYPE INNER..... RING ETCHED P/O 0118 186N101 (06053)	EA	1				*	*	*	2	5-4	N101	
P H	5355-534-2782	DIAL CONTROL N103 KNOB TYPE OUTER..... RING ETCHED P/O 0118 186N103 (06053)	EA	1				*	*	*	2	5-4	N103	
P D	5355-323-5895	DIAL CONTROL 0118 KNOB AND MOVABLE..... SCALE TYPE 24 SCALE DIV 186018 (06053)	EA	1				*	*	*	2	5-4	0118	
P H	5330-526-4811	GASKET H110 NEOPRENE 0.785 IN OD X..... 0.625 IN ID X 0.0625 IN THK A0284-17274 (11242)	EA	1				*	*	*	5	5-4	H110	
P H	6625-663-8065	GASKET H101 RUBBER TO SEAL REAR..... PLATE 17-23/32 IN OD X 13-31/32 IN ID X .064 IN THK 186H101 (06053)	EA	1				*	*	*	5	5-4	H101	
P H	6625-663-8064	GASKET H105 TO SEAL DIAL..... ASSY RUBBER 1-3/8 IN OD X 5/8 IN ID X 0.061 IN THK 186H105 (06053)	EA	1				*	*	*	5	5-4	H105	
P H	6625-663-8051	GASKET H113 RUBBER 14-7/64 IN OD X..... 13-25/32 IN ID X 1/8 IN THK 186H113 (06053)	EA	1				*	*	*	5	5-4	H113	
P H	6625-203-1569	GEAR, SPUR 0102 P/0 DIAL DRIVE..... DIAL ASSY 1860102 (06053)	EA	2				*	*	*	3	5-4	0102	
P H	3020-229-0738	GEAR, SPUR 0104 33 TEETH 0.547 IN OD X... 0.516 IN PD 1860104 (06053)	EA	1				*	*	*	3	5-4	0104	
P H	6625-223-8217	GEAR, SPUR 0105 177 TEETH RING SHAPE... P/O DIAL DRIVE 1860105 (06053)	EA	1				*	*	*	3	5-4	0105	
P D	6625-309-3512	HOUSING A107 ALUM ALLOY NO.195 5-3/4... IN LG X 4-5/8 IN DIA 186A107 (06053)	EA	1							3	5-4	A107	
P D	6625-322-5154	HOUSING A113 PROTECTS METER SHEET..... BRASS 3-7/16 IN LG X 3-1/2 IN DIA 186A113 (06053)	EA	1							3	5-4	A113	

SECTION II

TM11-6625-341-34P

(1) SAR CODE	(2) FEDERAL STOCK NUMBER	(3) DESCRIPTION REFERENCE NUMBER & MFR CODE USABLE CN CODE	(4) UNIT OF MEAS	(5) QTY INC IN UNIT	(6) 30-DAY QS MAINT ALLOWANCE			(7) 90-DAY QS MAINT ALLOWANCE			(8) 1 YR ALW PER 100 EQUIP CNTCT	(9) DEPOT ALW PER 100 EQUIP	(10) ILLUSTRATION	
					(6a)	(6b)	(6c)	(7a)	(7b)	(7c)			(10a) FIGURE NO	(10b) ITEM NO
					1-20	21-50	51-100	1-20	21-50	51-100				
P H	5970-552-1485	ENGL ATTR BRUSHING EHD1..... CAL ENDORICAL 1-1/2 IN LG X 7/16 IN DIA 196101 (06053)	EA	1			*	*	*			3	5-1	E101
P H	6625-322-5130	LEVER M10F ALUM CASTING P-D TUNING..... ASSY 196109 (06053)	EA	1			*	*	*			4	5-4	M109
P D	6625-309-3483	LEVER OLLI TOP PLATE SHAFT 3-1/8 IN..... LG 196111 (06053)	EA	1	*	*	*	*	*			4	5-5	M111
P H	6625-339-3484	LEVER OLLI BRASS 1/2 HARD 2-7/16 IN LG..... IRREGULAR SHAPE 196112 (06053)	EA	1			*	*	*			4	5-5	M112
P H	6625-322-4191	PROBE,RF INPUT P101 SILVER PLATED..... BRASS 1-1/2 IN LG APPROX 196101 (06053)	EA	1			*	*	*			3	5-4	P101
P H	6625-049-7795	PROBE,RF OUTPUT P102 ASSY C-O OLLI..... CR10L,HE29,AL16,P106,M129,W106,F101,AL17 AND HARDWARE 196102 (06053)	EA	1			*	*	*			3	5-4	P102
P D	6625-537-5399	LOOP,OUTPUT SUBASSEMBLY A117..... 196117 (06053)	EA	1								3	5-1	A117
P D	5320-533-5092	NUT,ADJUSTING H104 5/8 IN HEX X 3/4-24..... THD 196114 (06053)	EA	1								3	5-4	H104
P H	6625-096-7124	NUT,CLAMPING H109 HEX SHAPE 1-1/8 IN..... DIA ALUM ROD 1 IN-16 NS-2 THD 196109 (06053)	EA	1			*	*	*			3	5-4	H109
P H	5310-221-4890	NUT,PLAIN,CAP H102 NICKEL PL 3/8 IN-24..... NF-3 5/8 IN WD X 1/2 IN H O-4 196102 (06053)	EA	1			*	*	*			3	5-4	H102
P H	5310-208-2759	NUT,PLAIN,CAP H127 BRASS 10-24NC..... THD 3/8 IN HEX 196127 (06053)	EA	1			*	*	*			3	5-5	H127
P D	5310-208-3753	NUT,PLAIN,HEXAGON H134 BRASS 3/8-32..... NS-2 SILVER PLATED P-D ADAPTER CABLE P107 196134 (06053)	EA	1			*	*	*			3	5-5	H134
P D	5310-208-4893	NUT,PLAIN,RE TANGULAR H126..... BRASS 5/16-14NC-2 THD FLOATING MFG 196126 (06053)	EA	4								3	5-5	H126
P H	6625-523-9579	NUT,PLAIN,ROUND H108 7/16 IN H X 1.313..... IN OD 196118 (06053)	EA	1			*	*	*			3	5-4	H108
P H	5330-641-2130	PACKING,PREFORMED O117 O RING 3/8 IN..... ID X 1/2 IN OD X 1/16 IN THK AN6227B7 (89044)	EA	1			*	*	*			2	5-1	O117
P H	5330-640-9613	PACKING,PREFORMED O117 O RING 7/8 IN..... ID X 1/2 IN OD X 1/16 IN THK NOTE USED ON CONTRACT NUMBR 95198 ONLY AN6227-7 (89044)	EA	1			*	*	*			2	5-1	O117
P H	5975-395-8960	BEARING,PANEL H117 LOCATES PANEL..... CARRY CASE 7/16 IN LG X 1/2 IN DIA A078407324 (11242)	EA	4			*	*	*			2	5-5	H117

SECTION II

TM11-6625-341-34P

SMR CODE	FEDERAL STOCK NUMBER	DESCRIPTION	UNIT OF MEAS	QTY	30-DAY DS MAINT ALLOWANCE			30-DAY GS MAINT ALLOWANCE			BYR DEPOT		ILLUSTRATION	
					ALL			ALL			ALL PER	ALL PER	FIGURE	ITEM
					(12)	(13)	(14)	(15)	(16)	(17)	(18)	(19)	(20)	(21)
P H	4730-301-4491	BEARING,PANEL H117 LOCATES PANEL IN... CARRY CASE 7/16 IN LG X 1/2 IN DIA NOTE USED ON CONTACT NOBSR 85188 ONLY	EA	6				*	*	*		2	5-5	H117
P H	5305-324-8973	186H17 (06053) PIVOT ARM SCREW H125 SUPPORTS LEVER... ARM 1-11/32 IN LG X 3/8 IN HEX	EA	1				*	*	*		5	5-5	H125
P H	5340-200-2636	186H25 (06053) RING RETAINING H103A NOTE NOT USED ON... CONTACT NOBSR 85188	EA	3				*	*	*		2		
P D	5315-243-7992	510018 (79136) PIN,COTTER H103 3/64 IN NOM DIA X 3/8... IN NOM LGTH	EA	3								3	5-4	H103
P H	5315-297-1135	186H103 (06053) PIN,STRAIGHT,HEADLESS H106 SECURES... GEAR FOR DIAL DRIVE BRASS 1/2 HARD 0.343 IN LG DIA	EA	3				*	*	*		2	5-4	H106
P H	5315-200-6287	186H106 (06053) PIN,STRAIGHT,HEADLESS H111 SS TYPE... 303 3/4 IN LG	EA	2				*	*	*		2	5-4	H111
P H	5315-664-6599	186H111 (06053) PIN,STRAIGHT,HEADLESS H112 BRASS 1.343... IN LG X 0.110 IN DIA	EA	3				*	*	*		2	5-4	H112
P H	5315-290-6255	186H112 (06053) PIN,STRAIGHT,HEADLESS H114 BRASS 1/2... IN LG X 0.111 IN DIA	EA	1				*	*	*		2	5-4	H114
P D	6625-309-3493	186H14 (06053) PLATE,FRONT A103 ALUM ALLOY 1-3/4 IN... THK X 15 IN DIA	EA	1								3	5-4	A103
P H	5340-332-5131	186A103 (06053) PLATE,LEVER 0113 BRASS 1/2 HARD 2 IN... LG	EA	1				*	*	*		3	5-5	0113
P D	6625-309-3492	1860113 (06053) PLATE,REAR A101 ALUM ALLOY 7/16 IN THK... X 15 IN DIA	EA	1								3	5-4	A101
P D	6625-537-7130	186A101 (06053) ASSEMBLY,PLUNGER A104 CIRCULAR... SHAPE 5-57/61 IN LG X 1.281 IN DIA	EA	1								3	5-4	A104
P H		186A104 (06053) PLUNGER,DRIVE SCREW H103 STAINLESS... STEEL 11/16 IN OD X 7-7/32 IN LG 15 TURNS	EA	1				*	*	*		2	5-4	0103
P D		1860103 (06053) DIAL,POINTER N105 INDEX LINE MARKING ..	EA	1		*	*	*	*	*		2	5-5	N105
P D		186N105 (06053) DIAL,POINTER N106 INDEX LINE MARKING ..	EA	1		*	*	*	*	*		2	5-5	N106
P H		186N106 (06053) RETAINER,BEARING A105 HOLDING BEARING... IN PLACE 2-1/8 IN OD 15/16 IN DIA HOLE	EA	1				*	*	*		3	5-4	A105
P H		186A105 (06053) ROD,SPRING 0116 STAINLESS... STEEL IRREGULAR SHAPE 2-13/16 LG	EA	1				*	*	*		3	5-5	0116
P D		1860116 (06053) SCREW,ADJUSTING H129 NYLON 1/2 IN... CONTINUED	EA	1								5	5-1	H129

(1) SAR CODE	(2) FEDERAL STOCK NUMBER	(3) DESCRIPTION REFERENCE NUMBER & WFR CODE UTABLE DN CODE	(4) UNIT MEAS	(5) QTY	(6) 30-DAY CS MAINT ALLOWANCE			(7) 30-DAY CS MAINT ALLOWANCE			(8) 1-YR EQUIP CONTACT	(9) DEPOT EQUIP	(10) ILLUSTRATION	
					(a)	(b)	(c)	(a)	(b)	(c)			(a)	(b)
					1-20	21-50	51-100	1-20	21-50	51-100			FIGURE NO.	ITEM NO.
		CONTINUED												
P H	5305-206-5573	SHAPED 5-57/61 IN LG X 13.200 IN DIA 196H129 (06053) SCREW, EXTERNALLY RELIEVED BODY MILL... STEEL, CAD PLATED SLOT HEAD 8 IN LS	EA	4				*	*	*		5	5-5	0116
P H	5305-297-9121	SCREW, SHC, DCR H107 BRASS 1-3/32 IN LG, D/A 196H107 (06035)	EA	2				*	*	*		5	5-4	0107
P H	5305-207-0764	SCREW, MACHINE H122 SLOTTED..... SHOULDER 1/8 IN DIA X 11/32 IN LG D/A 4-40 NC-2 THD	EA	1				*	*	*		5	5-5	0122
P H	6625-692-6570	196H122 (06053) SEGMENT, ENGAGING D110 ALUM ALLOY.....	EA	1				*	*	*		3	5-4	0110
P D	5961-224-4868	CASTING, IRREGULAR SHAPE 1960110 (06053) SEMICONDUCTOR DEVICE, DIODE C9101.....	EA	1	*	*	*	*	*	*		3	5-1	
P D	5340-222-1227	WASHER, RETAINING W139 BRASS 2 1/32, IN OD, 0.390 IN ID, 0.003 IN THK	EA	1	*	*	*	*	*	*		3	5-4	0138
P D	7520-537-8693	196H138 (06053) SLIDE RULE, CIRCULAR N107 TO COMPARE... RING TIME	EA	1	*	*	*	*	*	*		3	5-5	0107
P D	6625-545-7677	196M107 (06053) SPRING, HELICAL COMPRESSION D106 6..... COILS, 19/32 IN FREE LENGTH	EA	2								3	5-4	0106
P D	6625-515-0958	1960106 (06053) SPRING, HELICAL, COMPRESSION D115 10..... COILS, 2-1/4 IN FREE LENGTH X 7/32 IN ID 6406 (U4009)	EA	1								3	5-5	0115
P D	6625-515-0956	SPRING, HELICAL, COMPRESSION D115 10..... COILS, 2-1/4 IN FREE LENGTH NOT USED ON CONTRACT NOB SR 05100 ONLY	EA	1								3	5-5	0115
P H	6625-309-3524	1960115 (06053) BEARING, D114 RETAINS SPRING ON SHIFTER ..	EA	1				*	*	*		2	5-5	0114
P D	5310-209-6504	1960114 (06053) WASHER, FLAT H136 STAINLESS STEEL 3/8... IN OD W/O .250 IN ID HOLE	EA	1								5	5-5	0136
P D	5310-205-8935	196H136 (06053) WASHER, FLAT H137 BRASS 11/32 IN DIA..... 2/2.100 IN ID HOLE	EA	1								5	5-4	0137
P H	5310-193-7428	196H137 (06053) WASHER, FLAT N102 P-O DRAL ASSW D119.....	EA	1				*	*	*		5	5-4	0102
P H	5330-096-7456	196N102 (06053) WASHER, FLAT NON METALLIC H115 NYLON..... 7/16 IN DIA X 1/32 IN THK	EA	2				*	*	*		5	5-4	0115
P D	6625-569-0336	196H115 (06053) CABINET, CASE AL08 SQUARE ALUM..... W/RETRACTABLE HANDLES	EA	1								3	5-5	0108
P D	3120-874-3589	196A108 (06053) BRUSHING, PANEL HANDLE H124 ALUM 5/8 IN... DIA X 3/8 IN THK	EA	4	*	*	*	*	*	*		3	5-5	0124

SECTION II

TM11-6625-341-34P

(1) SWR CODE	(2) FEDERAL STOCK NUMBER	(3) DESCRIPTION	(4) UNIT OF MEAS	(5) 30 DAY QS MUNIT ALLOWANCE			(6) 30 DAY QS MUNIT ALLOWANCE			(7) L YR EQUIP CATEG	(8) DEPOT MUNIT EQUIP	(9) ILLUSTRATION	
				(a) 1-20	(b) 21-50	(c) 51-100	(d) 1-20	(e) 21-50	(f) 51-100			(g) FIGURE NO	(h) ITEM NO
51	5895-796-1248	SPACER MILB ALUM 6-1/4 IN LG X 3/4 IN. - LOGHELL (06053)	EA	*	*	*				2	5-5	IND 3	

STOCK NUMBER	FIGURE NO.	ITEM NO.	STOCK NUMBER	FIGURE NO.	ITEM NO.
3020-229-0738	5-4	01104	5940-537-4213	5-5	01142
3110-056-7498	5-4	01101	5961-224-4868	5-1	
3120-309-3600	5-4	01107	5970-552-1485	5-4	01101
3120-874-3589	5-5	01124	5975-395-8960	5-5	01107
4730-301-4491	5-5	01117	5975-395-8960	5-5	01121
5305-206-5573	5-5	01116	6145-643-2107	5-5	01104
5305-207-0764	5-5	01122	6145-661-0191	5-5	01105
5305-297-9121	5-4	01107	6625-049-7795	5-4	01102
5305-324-8973	5-5	01125	6625-049-7806	5-4	01106
5306-297-9130	5-1	01129	6625096-7124	5-4	01105
5310-193-7428	5-4	01102	6625-096-7148	5-4	01105
5310-205-5035	5-4	01127	6625-203-1569	5-4	01102
5310-208-2559	5-5	01127	6625-203-8217	5-4	01105
5310-208-3753	5-5	01134	6625-301-4492	5-5	01119
5310-208-4893	5-5	01126	6625-309-3269	5-4	01106
5310-209-6504	5-5	01136	6625-309-3463	5-1	01106
5310-221-4890	5-4	01102	6625-309-3466	5-5	01107
5310-533-5092	5-4	01104	6625-309-3483	5-5	01111
5315-200-6287	5-4	01111	6625-309-3484	5-5	01112
5315-243-7992	5-4	01103	6625-309-3492	5-4	01101
5315-290-6255	5-4	01134	6625-309-3493	5-4	01103
5315-297-1135	5-4	01106	6625-309-3512	5-4	01107
5315-664-6599	5-4	01107	6625-309-3524	5-5	01114
530-096-7456	5-4	01105	6625-322-4160	5-1	01126
5330-526-4811	5-4	01110	6625-322-4191	5-4	01107
5330-640-9613	5-1	01117	6625-322-5130	5-4	01107
5330-641-2130	5-1	01117	6625-322-5135	5-4	01103
5340-200-2636			6625-322-5146	5-5	01116
5340-222-1227	5-4	01138	6625-322-5154	5-5	01113
5355-323-5895	5-4	01103	6625-515-0956	5-5	01115
5355-534-2782	5-4	01108	6625-523-8579	5-4	01105
5355-545-7468	5-4	01101	6625-532-4057	5-5	01108
5355-667-6315	5-5	01105	6625-532-4195	5-5	01101
5355-667-6316	5-5	01105	6625-537-5799	5-1	01117
5340-332-5134	5-5	01103	6625-537-7130	5-4	01104
5895-796-1248	5-5	01103	6625-539-9646	5-5	01101
5910-160-1105	5-5	01101	6625-545-7677	5-4	01106
5935-149-3983	5-5	01103	6625-569-0336	5-5	01107
5935-149-4136	5-1	01106	6625-663-8051	5-4	01103
5935-173-5895	5-5	01104	6625-663-8064	5-4	01101
5935-201-9374	5-5	01101	6625-663-8065	5-4	01101
5935-258-4382	5-5	01107	6625-692-6570	5-4	01100
5935-498-1131	5-4	01105	7520-537-8693	5-5	01107
5940-195-9698	5-4	01141			

REFERENCE NO.	MFR CODE	FIG. NO.	ITEM NO.	REFERENCE NO.	MFR CODE	FIG. NO.	ITEM NO.
AN6227-7	89044	5-1	01117	186A116	06053	5-1	01116
AN6227B-7	88044	5-1	01117	186A117	06053	5-1	01117
A078407274	11242	5-4	01113	186E101	06053	5-1	01101
A078407324	11242	5-5	01117	186H101	06053	5-4	01101
C953B1F8105V4	81349	5-5	01101	186H102	06053	5-4	01102
C978407314	11242	5-5	01101	186H103	06053	5-4	01103
AR16W100DCUAR	81349	5-5	01101	186H104	06053	5-4	01104
R621AU	81339	5-5	01104	186H105	06053	5-4	01105
R659AH	80058	5-5	01105	186H106	06053	5-4	01106
UG18CU	12992	5-5	01103	186H107	06053	5-4	01107
UG19BU	12992	5-5	01101	186H108	06053	5-4	01108
UG260BU	12992	5-5	01104	186H109	06053	5-4	01109
UG27BU	12992	5-4	01105	186H111	06053	5-4	01111
UG290U	12992	5-1	01106	186H112	06053	5-4	01112
UN213	81349	5-1	01106	186H113	06053	5-4	01113
176N108	06053	5-5	01108	186H114	06053	5-4	01114
184125	06053	5-5	01125	186H115	06053	5-4	01115
184137	06053	5-4	01137	186H116	06053	5-5	01116
186A101	06053	5-4	01101	186H117	06053	5-5	01117
186A102	06053	5-4	01102	186H118	06053	5-5	01118
186A103	06053	5-4	01103	186H119	06053	5-5	01119
186A104	06053	5-4	01104	186H121	06053	5-5	01121
186A105	06053	5-4	01105	186H122	06053	5-5	01122
186A106	06053	5-4	01106	186H124	06053	5-5	01124
186A107	06053	5-4	01107	186H126	06053	5-5	01126
186A108	06053	5-5	01108	186H127	06053	5-5	01127
186A113	06053	5-5	01113	186H128	06053	5-5	01128

SECTION IV

TM11-6625-341-34P

REF ID	FIG. NO.	ITEM NO.	REF ID	FIG. NO.	ITEM NO.
1860129	5-1	1129	1860102	5-4	1102
1860134	5-5	1134	1860103	5-4	1103
1860136	5-5	1136	1860104	5-4	1104
1860138	5-4	1138	1860105	5-4	1105
1860141	5-4	1141	1860106	5-4	1106
1860142	5-5	1142	1860107	5-4	1107
1860101	5-4	1101	1860109	5-4	1109
1860102	5-4	1102	1860110	5-4	1110
1860103	5-4	1103	1860111	5-5	1111
1860105	5-5	1105	1860112	5-5	1112
1860106	5-5	1106	1860113	5-5	1113
1860107	5-5	1107	1860114	5-5	1114
1860109	5-5	1109	1860115	5-5	1115
1860101	5-4	1101	1860116	5-5	1116
1860102	5-4	1102	1860118	5-4	1118
1860107	5-5	1107	79135		
1860101	5-4	1101	04039	5-5	1115

By Order of the Secretary of the Army:

CREIGHTON W. ABRAMS
General, United States Army
Chief of Staff

Official:

VERNE L. BOWERS

Major General, United States Army
The Adjutant General

Distribution:

Active Army:

USASA (2)
CNGB (1)
ACSC-E (2)
USAARENBD (2)
USAMB (10)
AMC (1)
USASTRATCOM (4)
MICOM (2)
TECOM (2)
HISA (ECOM) (70)
USACDC (2)
USACDCEC (5)
USACDC Agency (1)
CONARC (5)
ARADCOM (2)
ARADCOM Rgn (2)
OS Maj Comd (4)
LOGCOMD (5)
MDW (1)
Armies (2)
Corps (2)
Instl (2) except
 Ft Carson (10)
 Ft Gordon (10)
 Ft Huachuca (10)
Sec Colleges (2)

USASESS (5)
USAINTS (3)
USAADS (2)
USAFAS (2)
USARRMS (2)
USAFS (2)
USAES (2)
Army Dep (2) except
 SAAD (30)
 LEAD (14)
 TOAD (14)
 ATAD (10)
 LEAD (7)
Gen Dep (2)
Sig Sec, Gen Dep (2)
Sig Dep (5)
MAAG (1)
WRAMC (1)
USARMIS (1)
USAERDAA (2)
USAERDAW (2)
Sig FLDMS (1)
Units org under fol TOE:
 11-158 (1)
 29-134 (1)
 29-136 (1)

ARRG: State AG (3)

USAR: None

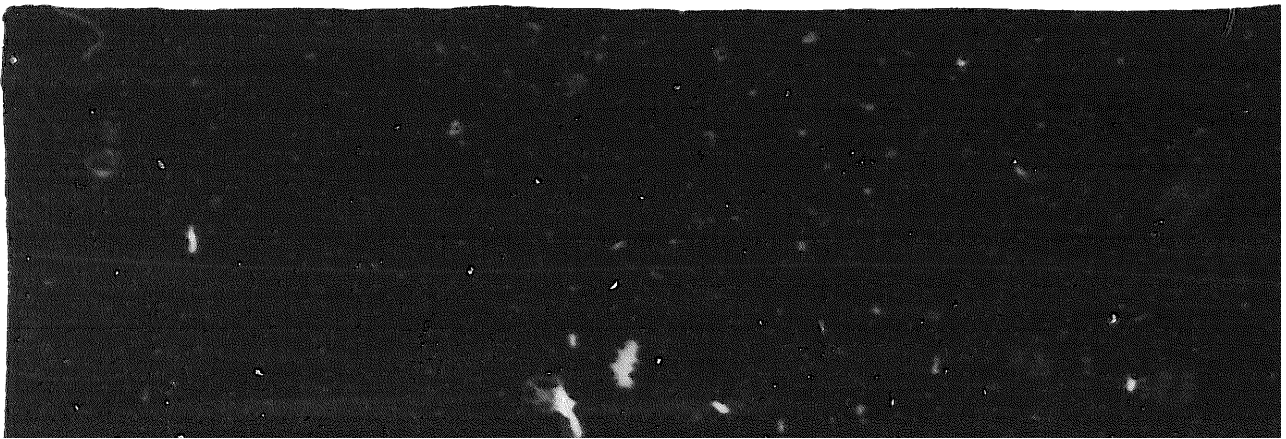
For explanation of abbreviations used, see AR 310-50.

END

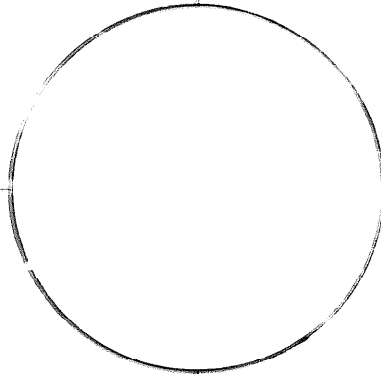
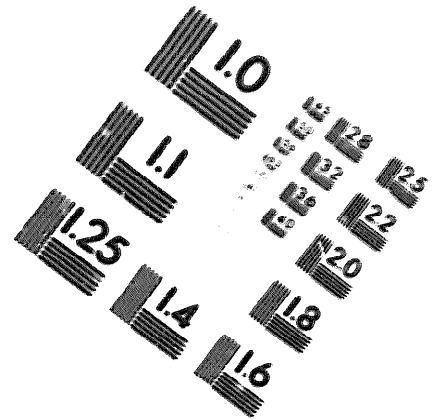
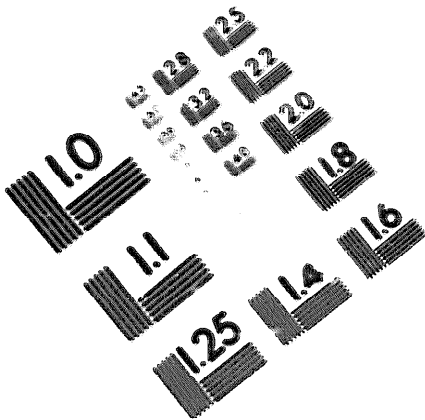
01-03-83

DATE





DEPARTMENT OF THE ARMY
MICROFORM
TEST TARGET



150 MM

1.0 mm (e= 0.39 mm)
ABCDEFGHIJKLMN O P Q R S T U V W X Y Z
1234567890 \$ % & ' () * + , - . : ;

1.5 mm (e= 1.09 mm)

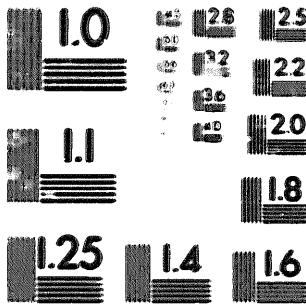
ABCDEFGHIJKLMN O P Q R S T U V W X Y Z
1234567890 \$ % & ' () * + , - . : ;

2.0 mm (e= 1.37 mm)

ABCDEFGHIJKLMN O P Q R S T U V W X Y Z
1234567890 \$ % & ' () * + , - . : ;

2.5 mm (e= 1.77 mm)

ABCDEFGHIJKLMN O P Q R S T U V W X Y Z
1234567890 \$ % & ' () * + , - . : ;



1.0 mm (e= 0.39 mm)
ABCDEFGHIJKLMN O P Q R S T U V W X Y Z
1234567890 \$ % & ' () * + , - . : ;

1.5 mm (e= 1.09 mm)

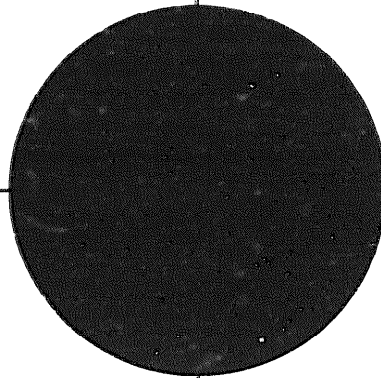
ABCDEFGHIJKLMN O P Q R S T U V W X Y Z
1234567890 \$ % & ' () * + , - . : ;

2.0 mm (e= 1.37 mm)

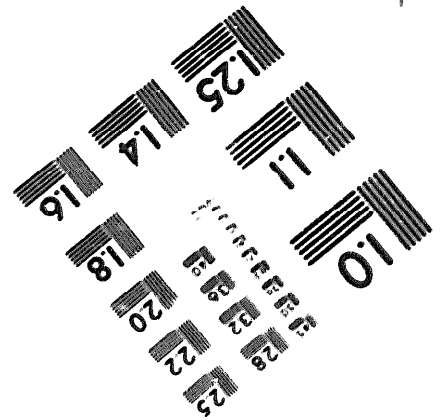
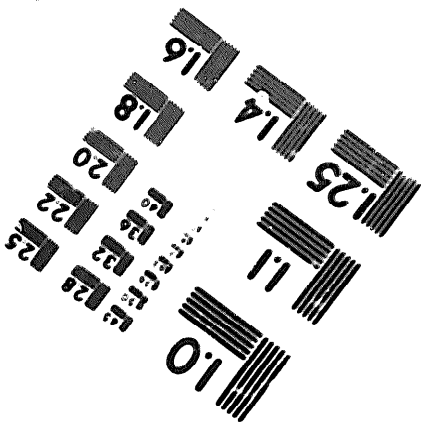
ABCDEFGHIJKLMN O P Q R S T U V W X Y Z
1234567890 \$ % & ' () * + , - . : ;

2.5 mm (e= 1.77 mm)

ABCDEFGHIJKLMN O P Q R S T U V W X Y Z
1234567890 \$ % & ' () * + , - . : ;



200 MM



250 MM